

<b>SCIENCES EXAM</b>		Number: <b>4.1</b>	
Last Name/First Name:		Group:	Date:
Orthography:	Syntax:	Global:	

**PREVIOUS WARNING: Each question will be assessed with a maximum of 1,0 points.**

**01. Do you think the plants only need water and mineral salts? Justify your answer.**  
*¿Crees que las plantas sólo necesitan agua y sales minerales? Justifica tu respuesta.*

**02. Summarise the main characteristics that allow us to identify a living being as belonging to the plants kingdom.**  
*Enumera las características que nos permiten identificar un ser vivo como perteneciente al reino de las plantas.*

**03. Translate and define the following concepts:**  
*Traduce y define los siguientes conceptos:*

CONCEPT	CONCEPTO	DEFINITION
Leaf		
Pollen		
Vascular system		
Hyphae		
Prothallus		

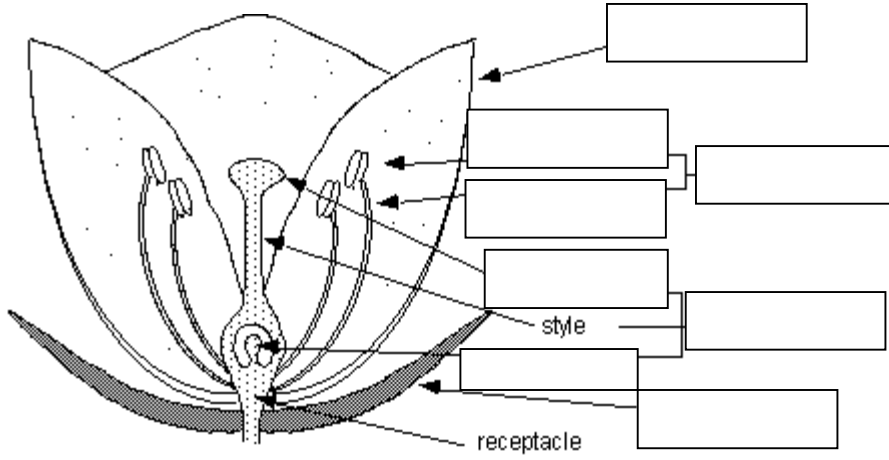
**04. Complete the diagram shown below.**  
*Completa el diagrama mostrado abajo.*

FLOWER	→	FRUIT
Egg cell	→	
Ovary	→	
Ovule	→	

**05. Distinguish between pollination and fertilization.**  
*Distingue entre polinización y fertilización.*

**06. Why the fungi are not a plant?**  
*¿Por qué los hongos no son plantas?*

07. **Label the picture shown below. What is what it is represented? Which is its function?**  
*Etiqueta la figura representada abajo. ¿Qué es lo representado? ¿Cuál es su función?*



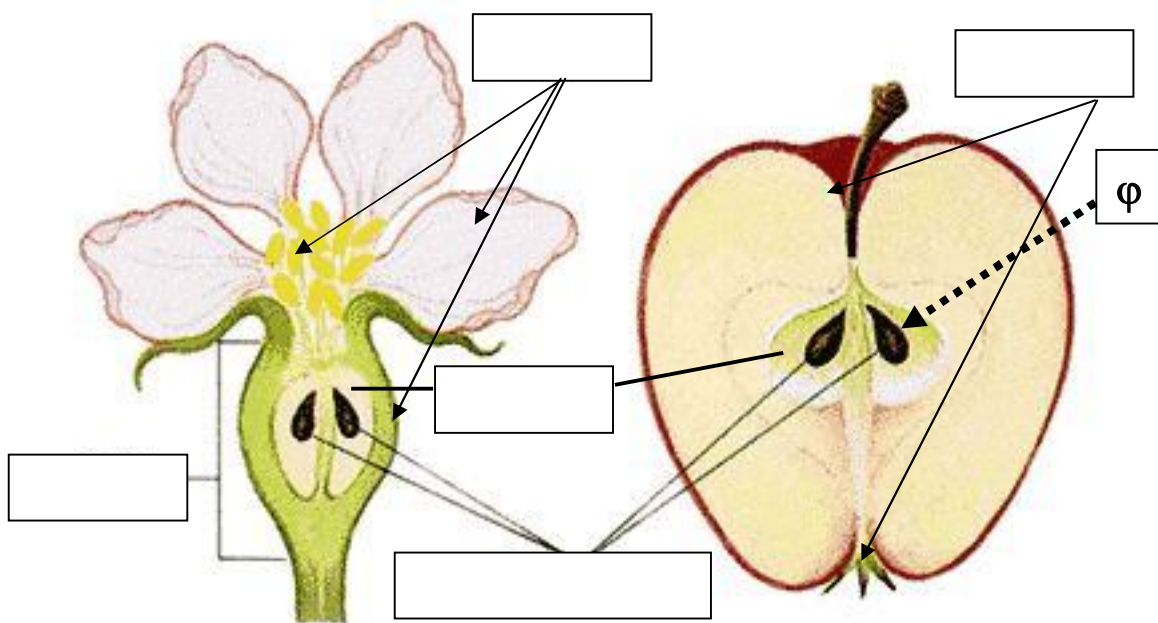
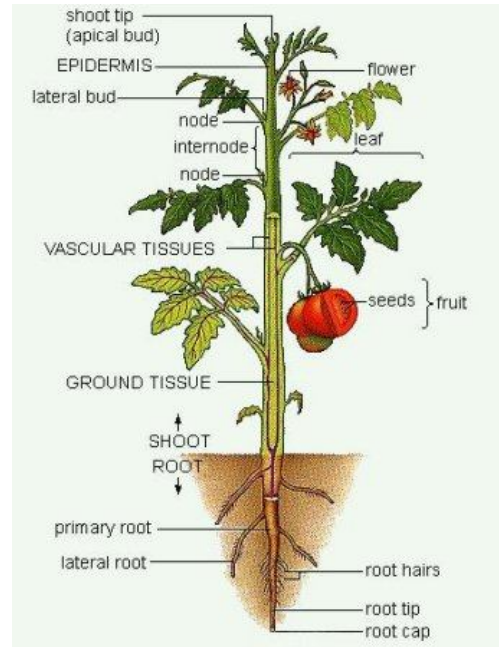
08. **Write the main differences between ferns and mosses.**  
*Escribe las principales diferencias entre helechos y musgos.*

<b>SCIENCES EXAM</b>		Number: <b>4.2</b>	
Last Name/First Name:		Group:	Date: <b>09.02.09</b>
Orthography:	Syntax:	Global:	

**WARNING:** You must choice only one of these questions, that will be assessed with a maximum of 2,00 points

The picture represents a plant scheme (e.g., a tomato plant). Can you explain where the photosynthesis occurs, where are the different compounds of this process coming from and which are its main waste products?

*La figura representa un esquema de una planta (p.ej. una tomatera). ¿Puedes explicar dónde se produce la fotosíntesis, de dónde proceden los componentes de este proceso y cuáles son sus principales residuos?*



What does the picture represent? Can you explain how was the element marked with “φ” formed?

*¿Qué representa la figura? ¿Puedes explicar cómo se ha formado el elemento marcado con un “φ”?*

<b>SCIENCES EXAM</b>		<b>Number: 4.2 (3rd Opt.)</b>	
Last Name/First Name:		Group:	Date:
Orthography:	Syntax:	Global:	

**WARNING: This question will be assessed with a maximum of 2,00 points**

a) The picture represents the \_\_\_\_\_.

b) Label the different parts of the scheme.

c) Describe the process represented in the picture.

a) La figura representa el/la \_\_\_\_\_.

b) Pon el nombre a las partes indicadas en el esquema.

c) Describe el proceso representado en el dibujo.

